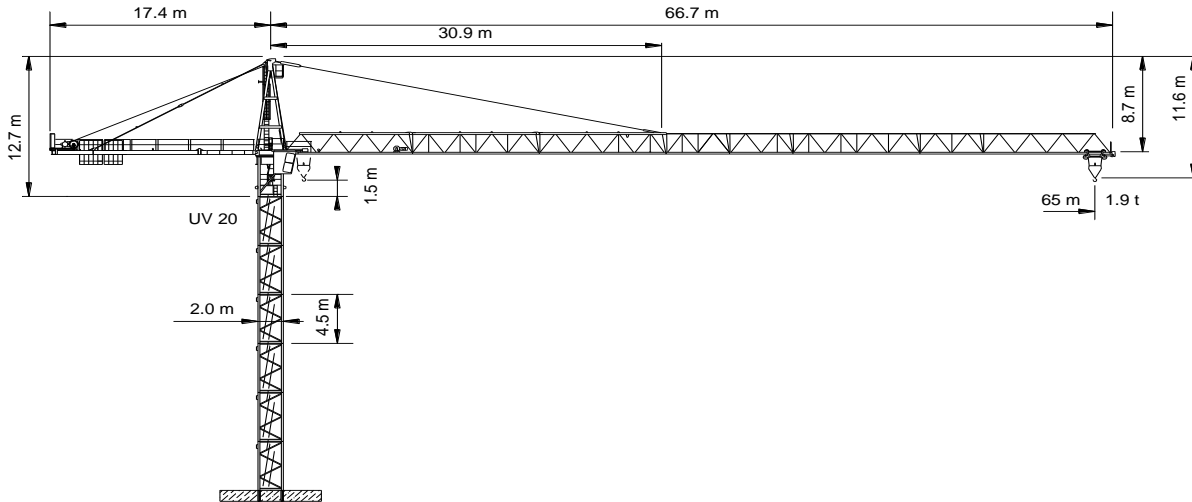


WOLFF WK 6522 FL-6 (CC plus)



Spitze 10 700 kg
 Ausleger 12 200 kg
 Gegenausleger 9 060 kg
 Autokran HK + 16 m



Anschluss / câble d'alimentation: 4 x 35[°]
 Absicherung / fusible: 100 A
 Anlaufstrom / courant de pointe maxi: 154 A

Ausladung / portée [m]		30	35	40	45	50	55	60	65			
Auslegerlänge [m] fleche [m]	65	2.6 - 28.2	6.2	5.70	4.80	4.10	3.50	3.10	2.70	2.40	Tragfähigkeit [t] force de levage [t]	
	60	2.6 - 30.3		6.20	5.20	4.50	3.90	3.40	3.00	2.70		(2.60)
	55	2.6 - 32.5		6.20	5.70	4.80	4.20	3.70	3.30	(3.20)		
	50	2.6 - 34.5		6.20	6.10	5.20	4.50	4.00	(3.90)			
	45	2.6 - 37.4		6.20	6.20	5.70	5.00	(4.70)				
	40	2.6 - 38.9		6.20	6.20	6.00	(5.60)					
	35	2.6 - 35.0		6.20	6.20	(6.20)						
	30	2.9 - 30.0		6.20	(6.20)							

	Motor [kW]	45		Motor [kW]	7.5		Motor [kW]	2 x 5
	m/min.	0...140		m/min.	1...80		r.p.m.	0...0.75 m ⁻¹