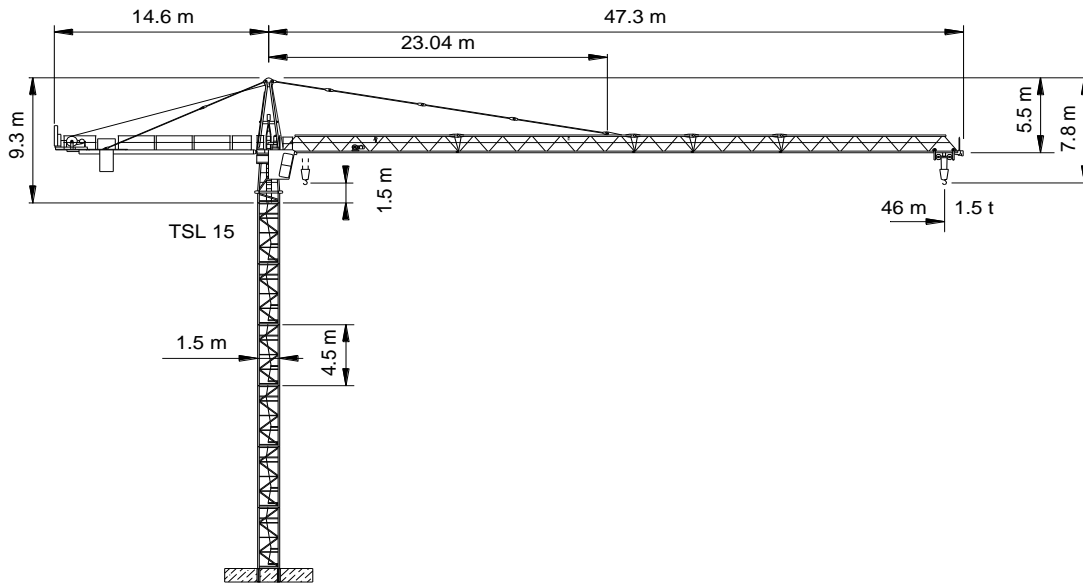


WOLFF WK 4615 SL



Spitze 5 000 kg
 Ausleger 5 600 kg
 Gegenausleger 4 800 kg
 Autokran HK+13 m



Anschluss / câble d'alimentation: 4 x 16[°]
 Absicherung / fusible: 63 A
 Anlaufstrom / courant de pointe maxi: 116 A

Ausladung / portée [m]		20	24	30	36	42	46			
Auslegerlänge [m] flèche [m]	46	2.5 - 26.3	 3.0	3.0	3.0	2.6	2.1	1.7	1.5	Tragfähigkeit [t] force de levage [t]
	42	2.5 - 27.6		3.0	3.0	2.7	2.2	1.8		
	36	2.5 - 28.8		3.0	3.0	2.9	2.3			
	30	2.5 - 30.0		3.0	3.0	3.0				
	24	2.5 - 24.0		3.0	3.0					

Ausladung / portée [m]		20	24	30	36	42	46			
Auslegerlänge [m] flèche [m]	46	2.5 - 14.2	 6.0	4.1	3.3	2.6	2.1	1.7	1.5	Tragfähigkeit [t] force de levage [t]
	42	2.5 - 14.9		4.3	3.5	2.7	2.2	1.8		
	36	2.5 - 15.5		4.5	3.7	2.9	2.3			
	30	2.5 - 16.2		4.7	3.9	3.0				
	24	2.5 - 16.6		4.9	4.0					

	Motor [kW]	22		Motor [kW]	2.4		Motor [kW]	4
	m/min.	17.5/.../105		m/min.	20/40		r.p.m.	0.85 m ⁻¹