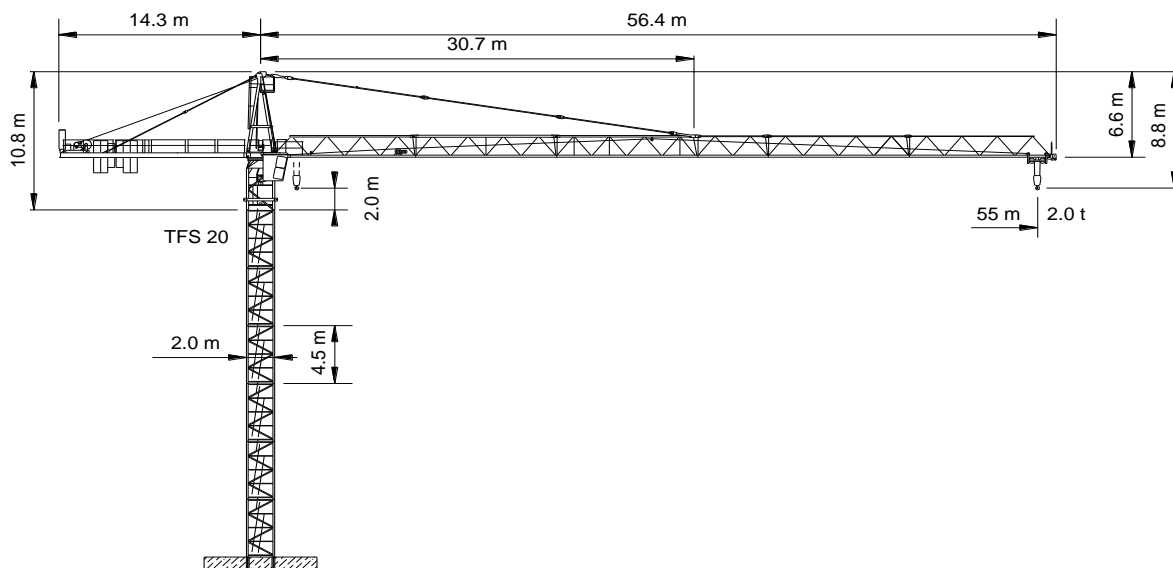


WOLFF WK 5520 FL (CC plus)



Spitze 7 600 kg
 Ausleger 8 900 kg
 Gegenausleger 7 400 kg
 Autokran HK + 14 m



Anschluss / câble d'alimentation: 4 x 16[°]
 Absicherung / fusible: 63 A
 Anlaufstrom / courant de pointe maxi: 103 A

Ausladung / portée [m]			25	30	35	40	45	50	55	
Auslegerlänge [m] flèche [m]	55	2.5 - 22.9	6.0	5.4	4.4	3.6	3.1	2.6	2.3	Tragfähigkeit [t] force de levage [t]
	50	2.5 - 24.2		5.8	4.6	3.9	3.3	2.8	2.5	
	45	2.5 - 24.4		5.8	4.7	3.9	3.3	2.9	(2.8)	
	40	2.5 - 24.6		5.9	4.8	4.0	3.4	(3.2)		
	35	2.5 - 24.9		5.9	4.8	4.0	(3.8)			
	30	2.5 - 25.7		6.0	5.0	(4.4)				
				(5.4)						

↕	Motor [kW]	28	↔	Motor [kW]	4	↻	Motor [kW]	7.5
	m/min.	0...90		m/min.	1...80		r.p.m.	0...0.8 m ⁻¹

Frutiger AG / Betriebe Uetendorf
 Postgässli 23 / 3661 Uetendorf
 www.der-werkhof.com / www.frutiger.com